

Highway Map

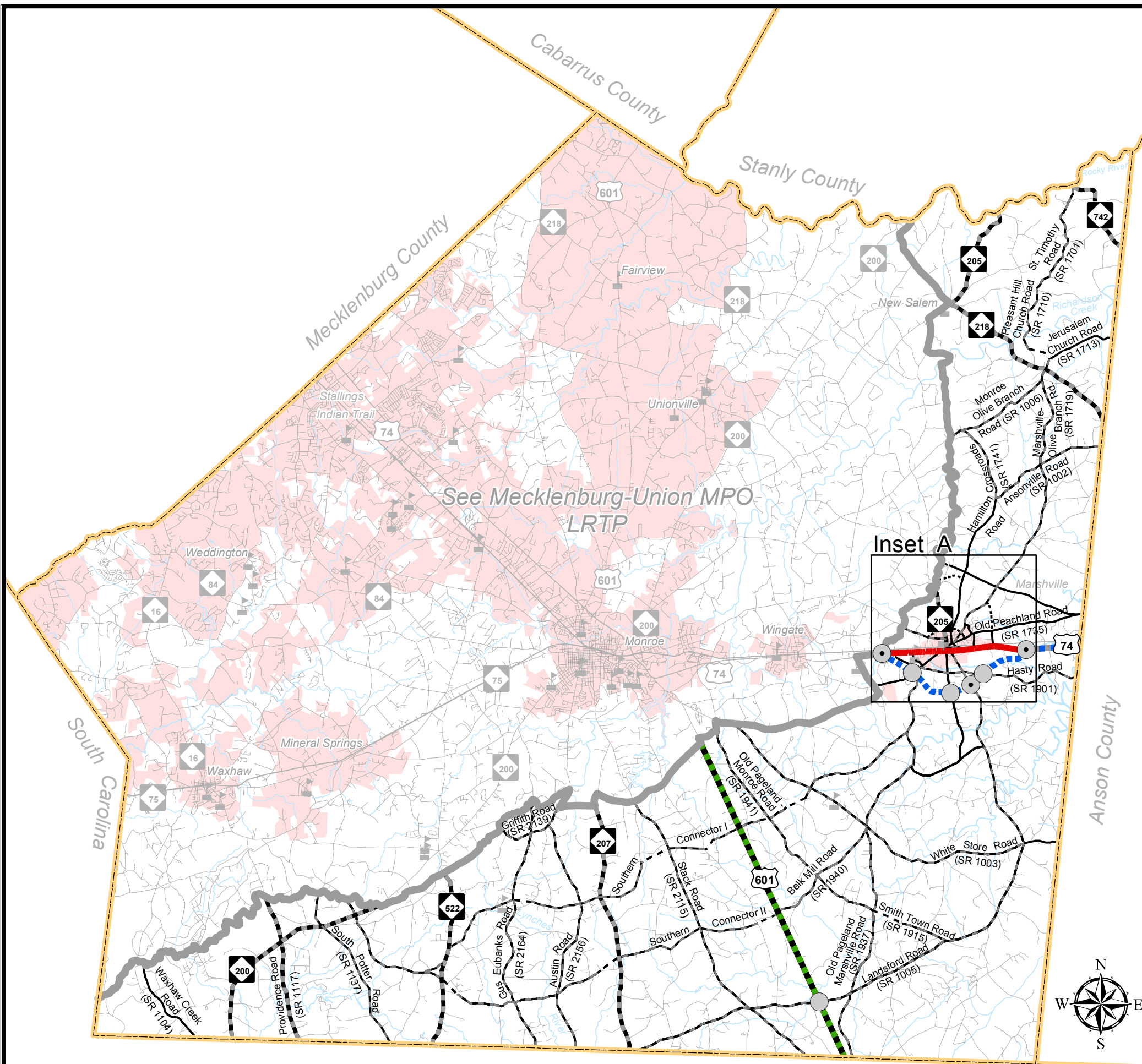
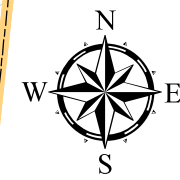
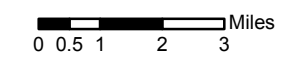


Union County North Carolina

Comprehensive Transportation Plan Plan date: March 26, 2010

- Freeways**
 - Existing
 - Needs Improvement
 - Recommended
- Expressways**
 - Existing
 - Needs Improvement
 - Recommended
- Boulevards**
 - Existing
 - Needs Improvement
 - Recommended
- Other Major Thoroughfares**
 - Existing
 - Needs Improvement
 - Recommended
- Minor Thoroughfares**
 - Existing
 - Needs Improvement
 - Recommended

- Existing Interchange
- Proposed Interchange
- Existing Grade Separation
- Proposed Grade Separation



South Carolina

See Mecklenburg-Union MPO
LRTP

Highway Map Inset A



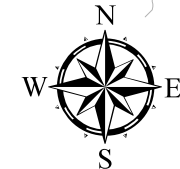
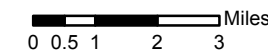
Union County North Carolina

Comprehensive Transportation Plan

Plan date: March 26, 2010

- Freeways**
 - Existing: Solid blue line
 - Needs Improvement: Blue line with diagonal hatching
 - Recommended: Dotted blue line
- Expressways**
 - Existing: Solid green line
 - Needs Improvement: Green line with diagonal hatching
 - Recommended: Dotted green line
- Boulevards**
 - Existing: Solid red line
 - Needs Improvement: Red line with diagonal hatching
 - Recommended: Dotted red line
- Other Major Thoroughfares**
 - Existing: Solid black line
 - Needs Improvement: Black line with diagonal hatching
 - Recommended: Dotted black line
- Minor Thoroughfares**
 - Existing: Thin solid black line
 - Needs Improvement: Thin black line with diagonal hatching
 - Recommended: Thin dotted black line

- Existing Interchange: Circle with a dot inside
- Proposed Interchange: Circle with a grey dot inside
- Existing Grade Separation: Open circle
- Proposed Grade Separation: Circle with a grey dot inside



Sheet 2A of 5

Base map date: September 2009

Refer to CTP document for more details

